



NAITIK HOME
APPLIANCES



SLIMERA SERIES

SLIMMEST FRAME FROM NAITIK HOME APPLIANCES



NAITIK HOME
APPLIANCES



SHARING  LOVE TOGETHER

www.naitikappliances.com



SLIMERA SERIES (070)

SLIMMEST FRAME
FROM NAITIK HOME APPLIANCES

New Designer Look
& Robust Pan Supports

Mirror Finish
Drip Tray

27mm

SLIMMEST FRAME

TOUGHENED
GLASS





SLIMERA SERIES (070)

SLIMMEST FRAME
FROM NAITIK HOME APPLIANCES

6mm

TOUGHENED GLASS FOR ENHANCE SLEEK LOOKS



Alloy Burners

Designer Legs for Better Stability



SLIMERA SERIES (070)

SLIMMEST FRAME
FROM NAITIK HOME APPLIANCES

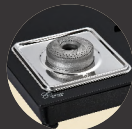


27mm

IS : 4246



4BR SLIMERA



Cooktop with Slimmest Frame

Alloy Burners

Designer Legs for Better Stability

New Designer Look & Robust Pan Supports

Mirror Finish Drip Tray, Heighted Mixing Tube for Better Flame

6mm Toughened Glass for Enhance Sleek Looks



SLIMERA SERIES (070)

SLIMMEST FRAME
FROM NAITIK HOME APPLIANCES

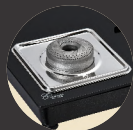


27mm

IS : 4246



3BR SLIMERA



Cooktop with Slimmest Frame

Alloy Burners

Designer Legs for Better Stability

New Designer Look & Robust Pan Supports

Mirror Finish Drip Tray, Heighted Mixing Tube for Better Flame

6mm Toughened Glass for Enhance Sleek Looks

IS : 4246



CM/L : 3083550



NAITIK HOME
APPLIANCES

Follow us on:



YouTube

www.naitikappliances.com