



NAITIK HOME  
APPLIANCES



THERE ARE  
MANY WAYS  
TO GIVE  
YOUR KITCHEN  
A MAKEOVER.

WE HAVE SOME.



PRO-SPHINX-21  
SERIES

# INTRODUCING DOUBLE SPILL DRIP TRAY FOR BETTER CLEANING



# PRO-SPHINX-21 SERIES (060)

4 BURNER  
PLATFORM



**8mm**

Toughened Glass

[www.naitikappliances.com](http://www.naitikappliances.com)

IS : 4246



CM/L : 3083550

Finish	Gas Stove on Toughened Glass Top, Stainless Steel Frame
Dimensions	635 x 575mm
Burner	1 Big Brass 2 Small Brass 1 Jumbo Brass
Burner Rating	68%
Knob	Metal
Pan Support	Euro Coated
Gas Nozzle	Brass - Multi-Directional
Drip Tray	Stainless Steel (Matt Finish)
Leg	Rubber
Ignition	Manual / Auto
Approved	ISI

# PRO-SPHINX-21 SERIES (060)

4 BURNER



**8mm**

Toughened Glass

[www.naitikappliances.com](http://www.naitikappliances.com)

IS : 4246



CM/L : 3083550

Finish	Gas Stove on Toughened Glass Top, Stainless Steel Frame
Dimensions	635 x 550mm
Burner	1 Big Brass 2 Small Brass 1 Jumbo Brass
Burner Rating	68%
Knob	Metal
Pan Support	Euro Coated
Gas Nozzle	Brass - Multi-Directional
Drip Tray	Stainless Steel (Matt Finish)
Leg	Rubber
Ignition	Manual / Auto
Approved	ISI

# PRO-SPHINX-21 SERIES (060)

3 BURNER



Finish	Gas Stove on Toughened Glass Top, Stainless Steel Frame
Dimensions	770 x 455mm
Burner	1 Big Brass 1 Small Brass 1 Jumbo Brass
Burner Rating	68%
Knob	Metal
Pan Support	Euro Coated
Gas Nozzle	Brass - Multi-Directional
Drip Tray	Stainless Steel (Matt Finish)
Leg	Rubber
Ignition	Manual / Auto
Approved	ISI

**8mm**

Toughened Glass

[www.naitikaplanes.com](http://www.naitikaplanes.com)

IS : 4246



CM/L : 3083550

# PRO-SPHINX-21 SERIES (060)

2 BURNER



**8mm**

Toughened Glass

[www.naitikappliances.com](http://www.naitikappliances.com)

IS : 4246

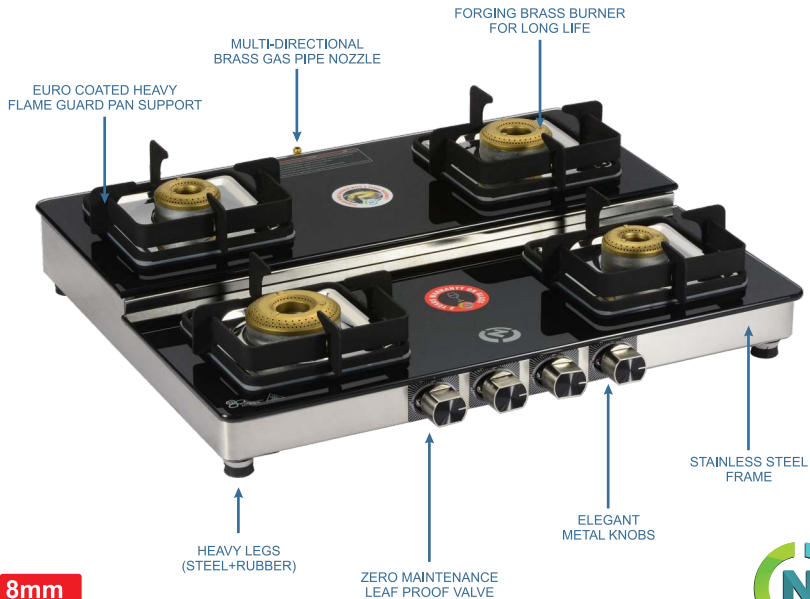


CM/L : 3083550

Finish	Gas Stove on Toughened Glass Top, Stainless Steel Frame
Dimensions	700 x 420mm
Burner	1 Big Brass 1 Small Brass
Burner Rating	68%
Knob	Metal
Pan Support	Euro Coated
Gas Nozzle	Brass - Multi-Directional
Drip Tray	Stainless Steel (Matt Finish)
Leg	Rubber
Ignition	Manual / Auto
Approved	ISI



# PRO-SPHINX-21 SERIES (060)



**8mm**

Toughened Glass

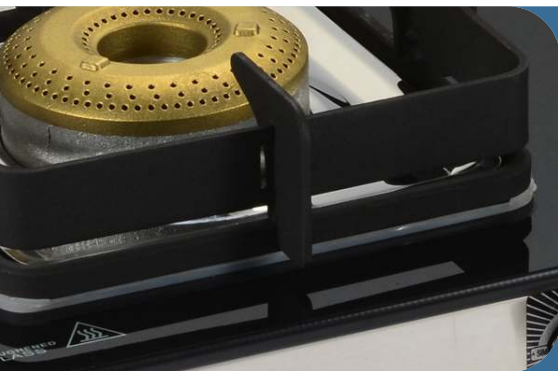
[www.naitikappliances.com](http://www.naitikappliances.com)



**NAITIK HOME  
APPLIANCES**

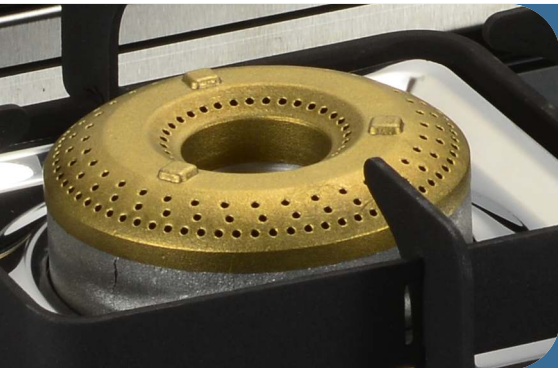
# PRO-SPHINX-21 SERIES (060)

## SPECIAL FEATURES

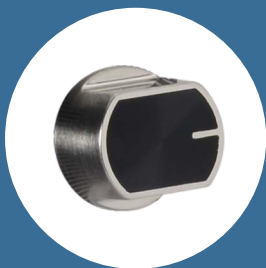


Euro Coated  
Heavy  
Flame Guard  
Pan Support





Forging  
Brass Burner  
for  
Long Life



Elegant Metal Knobs



Heavy Legs (Steel+Rubber)



## NAITIK HOME APPLIANCES

E-mail: [info@naitikhomeappliances.com](mailto:info@naitikhomeappliances.com)  
[naitikhomeappliances@gmail.com](mailto:naitikhomeappliances@gmail.com)

Note: Due to continuous R&D specifications & features  
may change without any prior notice.

Visuals are indicative only actual product may vary from the visuals shown.

Follow us on:

